

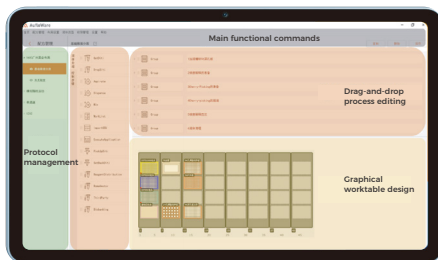
LIQUID HANDLING WORKSTATION

Auflo-P800SE

Fixed 1+8 pipetting channels

Mini Liquid Handling Workstation

Flexible and convenient experimental assistant



Compact

Flexible

High
costef-
fective



Optional 1 or 8 channel pipetting module

Supports simultaneous matching of single channel and 8-channel, with the pipetting range of 1-20 μ L, 10-200 μ L optional.



Flexible configuration for worktable

Compatible with all kinds of SBS plates and sample tubes, with optional modules such as temperature controller, shaker, etc.



Easy to use

Graphical software design, drag-and-drop process editing, built-in multiple pipetting modes, easy to use.



Compact size

No frame design, can be placed in biosafety cabinet.



Domestic consumables

Compatible with domestic automation consumables, high quality and low price, help to reduce costs and increase efficiency

Liquid Handling Workstation Auflo-P800SE

MegaRobo focuses on the research and development of robot and artificial intelligence technology and deeply integrate it into industrial applications, providing advanced intelligent automation products and solutions for customers. The self-developed Auflo-P800SE liquid handling workstation is equipped with a high-precision dual-channel pipetting module, with the pipetting range of 1-20 μL , 10-200 μL optional. It has the characteristics of small size, easy to use, flexible and fast. This workstation is widely used in the fields of bio-pharmaceutical, life sciences, and clinical diagnostics to continuously optimize experimental reliability and automated operation time, greatly improving efficiency of laboratory.

Parameters

Product model		Liquid Handling Workstation Auflo-P800SE	
Appearance	Dimensions	641(W)*531(D)*649(H)mm, can be placed in biosafety cabinet	
	Net weight	27KG	
Power supply	Voltage	220VAC	
	Frequency	50Hz	
	Rated power	450W	
Operating environment	Temperature	0°C-40°C	
	Humidity	30%-60%RH (No condensed water)	
Pipetting environment	Temperature	15°C-32°C	
	Humidity	30%-80%RH (No condensed water)	
Plate positions	Number of SBS plate positions	9	
Pipetting module	Components	Single-channel, 8-channel optional	
	Positioning precision of robotic arm	X-Y-Z positioning $\pm 0.1\text{mm}$	
Pipetting performance	Single channel, 8-channel module	Pipetting range	1-20 μL , 10-200 μL optional
		Pipetting precision	1-20 μL : 1 μL ≤5%; 20 μL ≤1%
			10-200 μL : 10 μL ≤3%; 200 μL ≤0.8%
Other	Function modules	Temperature controller, shaker, magnetic stand, etc.	

Application scenarios

General liquid handling

PCR setup

Nucleic acid purification

ELISA experiment dispensing

Cell plating and media replacement

Chip spotting



MegaRobo

Beijing, Shanghai, Suzhou, Shenzhen, Singapore, Japan, the United States and Britain
www.megarobo.com
officialmail@megarobo.tech

400-0601-017

Declaration

This copyright of this manual is owned by Beijing MegaRobo Technologies Co., Ltd. (hereinafter referred to as "MegaRobo"). Without the written permission of MegaRobo, no individual or organization may copy, edit or translate the contents of this manual into other languages in through any means. All trademarks or logos in this manual belong to MegaRobo and its providers. Due to manual updates, product updates, parameter changes, etc., the information in this manual may be changed, upgraded, omitted or incorrect, etc. MegaRobo shall not be liable for any losses caused by the provision or use of this manual. For more product information and technical services, please contact the official customer service phone number, e-mail or WeChat public number. All trademarks mentioned in this brochure are protected by law. MegaRobo has the right to interpret this manual.