

Liquid Handling Workstation Auflo T9600



Product Introduction

The Auflo-T9600 liquid workstation is a small 96-channel automatic liquid transfer equipment, which not only has a variety of liquid transfer processing modes, but also has simple and reliable operation. It is accurate and efficient in liquid transfer, equipped with multirange piston head, and widely applied to PCR system construction, molecular breeding, drug screening and other fields to meet customers' needs.

USAGE SCENARIOS

PCR Setup

NGS Library Building

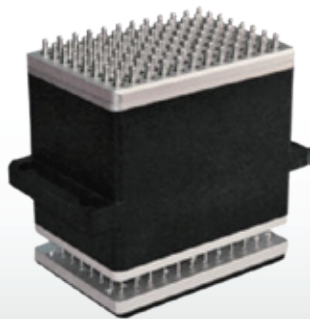
ELISA

Compound Library Screening

Cytotoxicology Testing

Drug Orthogonal Combinations

Multi-range 96-channel pipette tip



20µL piston

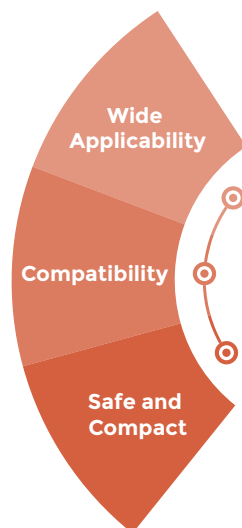


200µL piston



1000µL piston

Features



- The 3-tray and 4-tray models are available according to customers' requirements
- It has 6 handling modes: pipetting, dispensing, mixing, 96-well PCR setup, 384-well PCR setup and custom
- There are 3 measuring ranges available, so as to meet the demands for pipetting within the range of 0.5-1000 µL
- There are 3 types of pistons for replacement, and the piston head can be replaced within one minute
- Compatible with suction heads with several specifications
- Compatible with several types of microwell plates conforming to the SBS standards
- Compact model, so that more specimens and consumables can be put in limited space, thus improving the work efficiency
- Good safety, so that it can be used in biosafety cabinet or clean bench, thus protecting the health of personnel

Parameters

Model	Liquid Handling Workstation Auflo T9600
Dimensions	450mm(W)*350mm(D)*580mm(H)
Pipetting Range	0.5-1000µL
Pipetting Precision	10µL<1.0%; 100µL<1.0%; 1000µL<0.5%
Pipetting Accuracy	10µL<2.0%; 100µL<1.0%; 1000µL<1.0%



MegaRobo

202, Building 1, Yunli Intelligent Park, Shutianpu Community,
Matian Subdistrict Guangan District, Shenzhen City, China
www.megarobo.cn
charlie.peng@megarobo.tech
+86-75586541 575